

1xRTT Single-channel (1x) Radio Transmission Technology
1xEVDO 1xRTT Evolution - Data Only
2G 2nd Generation
3G 3rd Generation
3GPP 3rd Generation Partnership Project

A
AAA Authentication, Authorization and Accounting
AAV Alternate Access Vendor
ABM Asynchronous Balanced Mode
ABQP Aggregate Base Station Subsystem Quality of Service Profile
AC Alternating Current/Air Conditioning/Access Control/Access Class
ACE Authentication Encryption
ACEK Authentication Encryption Key
ACI Adjacent Channel Interference
ACK Acknowledgement
ACLR Adjacent Channel Leakage Ratio
ACP Access Control Point/Automatic Cell Planning
ACS Adjacent Channel Selectivity
ADC Analog-to-Digital Converter
ADM Asynchronous Disconnect Mode
ADS Advanced Design System
ADSL Asymmetric Digital Subscriber Line
AES Advanced Encryption Standard
AF Authentication Framework/Application Function
AGC Automatic Gain Control
AICH Acquisition Indicator Channel
AIPN All Internet Protocol Network
AKA Authentication and Key Agreement
ALC Automatic Loop Control
AM Acknowledge Mode/Amplitude Modulation
AMBR Aggregate Maximum Bit Rate
AMC Adaptive Modulation and Coding
AMD Acknowledged Mode Data
AMPR Additional Maximum Power Reduction
AMPS Advanced Mobile Phone System
AMR Adaptive Multi-Rate
AMR-WB AMR-Wideband
AN Access Network
ANR Automatic Neighbour Relation
ANSI American National Standards Institute
AoA Angle of Arrival
AoD Angle of Departure
AP Application Part/Application Protocol
API Application Programming Interface
APN Access Point Name
ARFCN Absolute Radio Frequency Channel Number
ARP Allocation and Retention Priority
ARPU Average Revenue Per User
ARQ Automatic Repeat Request
AS Access Stratum/Active Set/Azimuth Spread/Angular Spread
ASCII American Standard Code for Information Interchange
ASIC Application Specific Integrated Circuit
ASN.1 Abstract Syntax Notation number 1
ASSEM Additional Spectrum Emission Mask
ATM Asynchronous Transfer Mode
ATS Abstract Test Suite
ATT Attenuator
AWGN Additive White Gaussian Noise

B
BBIC Baseband IC
BBIQ Baseband IQ
BCC Basic Colour Code
BCCH Broadcast Control Channel
BCH Broadcast Channel
BCM Bearer Control Mode
BDM Background Debug Mode
BER Bit Error Ratio
BERT Bit Error Ratio Tester
BIOS Basic Input-Output System
BLER Block Error Ratio
BO Buffer Occupancy/ Business Objects (Ericsson)
BP Bandwidth Parts

BPS Bits Per Second
BPSK Binary Phase-Shift Keying
BS Bearer Service/Base Station
BSIC Base Station Identity Code
BSC Base Station Controller
BSR Buffer Status Report
BSS Base Station Subsystem
BTP Backhaul Transport Provider
BTS Base Transceiver Station
BW Bandwidth

C
C/I Carrier to Interference Ratio
CAC Call Admission Control
CAPEX Capital Expenditure
CB Citizens Band/Circular Buffer
CBC Cell Broadcast Center
CBR Constant Bit Rate
CC Convolutional Code
CCCH Common Control Channel
CCDF Complementary Cumulative Distribution Function
CCE Control Channel Element
CCF CDMA Certification Forum
CCO Cell Change Order
CDA Call Drop Analysis (Nortel)
CDD Cyclic Delay Diversity
CDMA Code Division Multiple Access
CDR Call Detail Record
CES Circuit Emulated Services
CFI Control Format Indicator
CFO Carrier Frequency Offset/Chief Financial Officer
CFR Crest Factor Reduction
CFT Call Failure Trace (Alcatel-Lucent)
CGI Cell Global Identification
CI Codebook Index/ Cell ID
CINR Carrier to Interferer and Noise Ratio
CK Ciphering Key
CL-SM Closed Loop Spatial Multiplexing
CM Configuration Management
CMOS Complementary Metal Oxide Semiconductor
CN Core Network
COFDM Coded Orthogonal Frequency Division Multiplexing
Co-MIMO Cooperative MIMO
CoMP Coordinated Multi-Point
CP Cyclic Prefix/Control Plane
CPICH Common Pilot Channel
CPRI Common Public Radio Interface
CPT Control PDU Type/Cell Performance Trace (Nortel)
CQI Channel Quality Indicator
CR Change Request
CRC Cyclic Redundancy Check
C-RNTI Cell Radio Network Temporary Identity
CS Circuit Switched
CSFB Circuit Switched Fall Back
CSG Closed Subscriber Group
CSI Channel State Information
CSI 2 Camera Serial Interface 2
CSN.1 Concrete Syntax Notation number 1
CTb Call Trace – Basic (Alcatel-Lucent)
CTg Call Trace – Geographical (Alcatel-Lucent)
CTIA Cellular Telecommunications Industry Association
CTn Call Trace – Neighbor (Alcatel-Lucent)
CTR Cell Traffic Recording (Ericsson)
CW Code Word/Continuous Wave/Carrier Wave

D
DAC Digital-to-Analog Converter
DAI Downlink Assignment Index
DAS Distributed Antenna System
dB Decibel
DBMS Database Management System
DBS Direct Broadcast Satellite
DC Direct Current
DCCH Dedicated Control Channel
DCI Downlink Control Information

DCS Display Command Set
DFT Discrete Fourier Transform
DFT-S Discrete Fourier Transform Spread
DHCP Dynamic Host Configuration Protocol
DL Downlink
DLL Dynamic Link Library
DL-SCH Downlink Shared Channel
DMRS Demodulation Reference Signal
DNS Directory Name Service
DoA Direction of Arrival
D-PHY 500 Mbps Physical Layer
DRA Dynamic Resource Allocation
DRB Data Radio Bearer
DRX Discontinuous Reception
DSI Display Serial Interface
DSIM Digital Signal Interface Module
DSL Digital Subscriber Line
DSP Digital Signal Processing
D-SR Dedicated Scheduler Request
DT Development Toolset
DTCH Dedicated Traffic Channel
DTM Dual Transfer Mode
DTX Discontinuous Transmission
DVB-T Digital Video Broadcast-Terrestrial
DVM Digital Volt Meter
DwPTS Downlink Pilot Time Slot

E
ECGI E-UTRAN Cell Global ID
ECI E-UTRAN Cell Identifier
ECM EPS Connection Management
ED Error Detecting
EDA Electronic Design Automation
E-DCH Enhanced Dedicated Channel
EDGE Enhanced Data rates for GSM Evolution
EDT Electrical Down Tilt
EHF Extremely High Frequency
EIA Evolved Packet System Integrity Algorithm
EIR Equipment Identity Register
EIRP Effective Isotropic Radiated Power
EMC Electromagnetic Compatibility
EMM EPS Mobility Management
eNB Evolved Node B
EPA Extended Pedestrian A Model
EPC Evolved Packet Core
ePDG Evolved Packet Data Gateway
EPRE Energy Per Resource Element
EPS Evolved Packet System
E-RAB Evolved Radio Access Bearer
ERP Effective Radiated Power
ESM EPS Session Management
ESP Encapsulating Security Payload
ETDMA Expanded TDMA
E-TM E-UTRA Test Model
ETSI European Telecommunications Standards Institute
ETU Extended Typical Urban
E-UTRA Evolved Universal Terrestrial Radio Access
E-UTRAN Evolved Universal Terrestrial Radio Access Network
EVA Extended Vehicular A
EVM Error Vector Magnitude

F
FAS Frequency Allocation Support (Ericsson)
FAT File Allocation Table
FC Frame Control/Fiber Channel
FCC Federal Communications Commission
FDD Frequency Division Duplex
FDE Frequency-Domain Equalizer
FDM Frequency-Division Multiplexing
FDMA Frequency Division Multiple Access
FDSS Frequency Domain Spectral Shaping
FEC Forward Error Correction
FER Frame Erasure Rate
FFT Fast Fourier Transform
FI Framing Indicator

FIR Finite Impulse Response
FM Fault Management/Frequency Modulation
FPGA Field Programmable Gate Array
FR Full Rate/Frame Relay
FRC Fixed Reference Channel
FS1 Frame structure type 1
FS2 Frame structure type 2
FSK Frequency Shift Keying
FTP File Transfer Protocol
FWA Fixed Wireless Access

G
GAN Generic Access Network
GANC GAN Controller
GbE Gigabit Ethernet
Gbps Gigabit per second
GBR Guaranteed Bit Rate
GCF Global Certification Forum
GEO Geostationary Earth Orbit
GERAN GSM Enhanced Radio Access Network
GGSN Gateway GPRS Support Node
GHz Giga-Hertz
GIS Geographic Information System
GMLC Gateway Mobile Location Center
GP Guard Period
G-PDU GTP-U non-signalling PDU
GPEH General Performance Event Handling (Ericsson)
GPRS General Packet Radio Service
GPS Global Positioning System
GRE Generic Routing Encapsulation
GSM Global System for Mobile Communication
GSMA GSM Association
GSN GPRS Support Node
GTP GPRS Tunneling Protocol
GUI Graphical User Interface
GUMMEI Globally Unique MME Identity
GUTI Globally Unique Temporary Identity
GW Gateway

H
HARQ Hybrid Automatic Repeat Request
HDL Hardware Description Language
HDSL High Bit-Rate DSL
HeNB Home eNB
HF High Frequency (3-30MHz)
HFN Hyper Frame Number
HI HARQ Indicator
HII High Interference Indicator
HLR Home Location Register
HO Handover
HPLMN Home Public Land Mobile Network
HR Half Rate
HRPD High Rate Packet Data
HSDPA High Speed Downlink Packet Access
HSPA High Speed Packet Access
HSPA+ HSPA Evolution
HSS Home Subscriber Server
HSUPA High Speed Uplink Packet Access
HTTP Hypertext Transfer Protocol

I
I/O Input/Output
IC Integrated Circuit
ICE In-Circuit Emulator
ICI Inter-Carrier Interference
ICIC Inter-Cell Interference Coordination
ICS Implementation Conformance Statement
IDE Integrated Development Environment
iDEN Integrated Dispatch Enhanced Network
IDFT Inverse Discrete Fourier Transform
IE Information Element
IEEE Institute of Electrical and Electronics Engineers
IETF Internet Engineering Task Force
IF Intermediate Frequency
IFDMA Interleaved Frequency Division Multiple Access

IFFT Inverse FFT
IM IP Multimedia/Interference Matrix/Interaction Matrix
IMCS Index Modulation and Coding Scheme
IMD InterModulation Distortion
IMEI International Mobile Equipment Identity
IMS IP Multimedia Subsystem
IMN CN SS IMS Core Network Subsystem
IMS Internet Protocol Multimedia Subsystem
IMSI International Mobile Subscriber Identity
IMT International Mobile Telecommunications
IODT Interoperability Development Testing
IOT Interoperability Testing
IP Internet Protocol/Intellectual Property
IPv4 Internet Protocol version 4
IPv6 Internet Protocol version 6
IQ In-phase Quadrature
IQoIP IQ over Internet Protocol
I-RAT Inter-Radio Access Technology
IRC Interference Rejection Combining
ISD Inter-Site Distance
ISDN Integrated Services Digital Network
ISI Inter Symbol Interference
ISR Idle-mode Signal Reduction
ISUP ISDN User Part
ITU International Telecommunications Union
IuB Interface Node-B
IuCS Interface Circuit Switched
IuPS Interface Packet Switched
IuR Interface RNC
IWS Interworking Solution

K
kbps Kilobits Per Second
KPI Key Performance Indicator
KSI Key Set Identifier

L
L1 Layer 1
L2 Layer 2
L3 Layer 3
LA Location Area
LAC Location Area Code
LAI Location Area Identity
LAN Local Area Network
LAP Link Access Protocol
LAPB Link Access Protocol Balanced
LAPD Link Access Protocol Digital
LATA Local Area and Transport Area
LAU Location Area Update
LB Load Balancing/Loop Back
LBI Linked EPS Bearer Identity
LBS Location Based Service
LCG Logical Channel Group
LCS Location Services
LCID Logical Channel ID
LCR Low Chip Rate
LCS Location Service
LEO Low Earth Orbit
LF Low Frequency (30-300kHz)
LI Length Indicator
LLC Logical Link Control
LLR Log-Likelihood Ratio
LMDS Local Multipoint Distribution Services
LMMSE Linear Minimum Mean Square Error
LMS Location and Monitoring Service
LMU Location Measurement Units
LNA Low Noise Amplifier
LO Local Oscillator
LOS Line-of-Sight
LPP LTE Positioning Protocol
LR Location Registration
LSF Last Segment Field
LTE Long Term Evolution
LVDS Low Voltage Differential Signalling

M

MAC Medium Access Control
MAC-I Message Authentication Code
MAN Metropolitan Area Network
Mbps Megabits per second
MBR Maximum Bit Rate
MBSFN Multicast/Broadcast over Single Frequency Network
MCC Mobile Country Code
MCCH Multicast Control Channel
Mcps Mega-chips per second
MCE MAC Control Element
MCH Multicast Channel
MCS Modulation and Coding Scheme
MDT Mechanical Down Tilt
MF Medium Frequency (300kHz to 3 MHz)
MGW Media Gateway
MIB Master Information Block
MIMO Multiple Input Multiple Output
MIN Mobile Identification Number
MIP Mobile Internet Protocol
MIPI Mobile Industry Processor Interface
MISO Multiple Input Single Output
MLS Mobile Location Service
MME Mobility Management Entity
MML Man Machine Language
MMS Multimedia Messaging Service
MMSE Minimum Mean Squared Error
MNC Mobile Network Code
MO Mobile Originated
MOC Mobile Originating Call
MOCN Multi-Operator Core Network
MOP Maximum Output Power
MOU Minutes of Use
MPR Maximum Power Reduction
MRC Maximum Ratio Combining
MRR Measurement Result Recording (Ericsson)
MS Mobile Station
MSB Most Significant Bit
MSC Mobile Switching Center
MSD Maximum Sensitivity Degradation
MSE Minimum Squared Error
MSISDN Mobile Station International Subscriber Directory Number
Mspm Mega-samples per second
MSS Mobile Switching Center Server
MSRN Mobile Station Roaming Number
MT Mobile Terminated
MTCH Multicast Traffic Channel
MTR Mobile Traffic Recording (Ericsson)
MTU Maximum Transfer Unit
MU-MIMO Multi-User MIMO
MW Microwave

N

NACC Network Assisted Cell Change
NACK Negative Acknowledgement
NACS Non-Adjacent Channel Selectivity
NAMPS Narrowband AMPS
NAP Network Access Point
NAS Non-Access Stratum
NB Node B
NCC Network Colour Code
NCL Neighbor Cell List
NCS Neighbor Cell Support (Ericsson)
NDI New Data Indication
NDS Network Domain Security
NE Network Element
NEM Network Equipment Manufacturer
NF Noise Figure
NFC Near Field Communication
NGMN Next Generation Mobile Networks
NLOS Non-Line-of-Sight
NNSF NAS Node Selection Function
NOC Network Operations Center
NOS Network Operating System
NRI Network Resource Identifier
NRT Non-Real Time
NSS Nodal Switching System
NTSC National Television Standards Committee

O

O&M Operations and Maintenance
OAM Operations and Maintenance
OBSAI Open Base Station Architecture Interface

OBW Occupied Bandwidth
OEM Original Equipment Manufacturer
OFDM Orthogonal Frequency Division Multiplexing
OFDMA Orthogonal Frequency Division Multiple Access
OI Overload Indicator
OMC Operation and Maintenance Center
OOB Out of Band
OPEX Operational Expenditure
OSS Operation Support System
OTA Over the Air
OTDOA Observed Time Difference of Arrival
OTCell Object Trace Cell (Alcatel Lucent)

P

P/S Parallel to Serial
PA Power Amplifier
PAM Pulse Amplitude Modulation
PAPR Peak-to-Average Power Ratio
PAR Peak-to-Average Ratio
PAS Power Azimuth Spectrum
PB Pass Band
PBCH Physical Broadcast Channel
PBR Prioritized Bit Rate
PC Power Control
PCC Policy and Charging Control
PCCC Parallel Concatenated Convolutional Code
PCCH Paging Control Channel
P-CCPCH Primary Common Control Physical Channel
PCFICH Physical Control Format Indicator Channel
PCH Paging Channel
PCI Physical Cell Identifier
PCM Pulse Code Modulation
PCRF Policy and Charging Rules Function
PCS Personal Communication System
PDB Packet Delay Budget
PDCCH Physical Downlink Control Channel
PDCP Packet Data Control Plane/Packet Data Convergence Protocol
PDN Packet Data Network
PDN-GW Packet Data Network Gateway
PDP Power Delay Profile/Packet Data Protocol
PDSCH Physical Downlink Shared Channel
PDU Protocol Data Unit
PECF Policy Enforcement and Charging Function
PF Paging Frame/Packet Flow
PHICH Physical Hybrid ARQ Indicator Channel
PI Paging Information
PIN Personal Identification Number
PL Path-Loss
PLMN Public Land Mobile Network
PLR Packet Loss Rate
PMCH Physical Multicast Channel
PM Phase Modulation/Performance Management
PMCCCH Primary Multicast Control Channel
PMI Precoding Matrix Indicator
PMIP Proxy Mobile Internet Protocol
PMRES Performance Management Radio Environment Statistics (Ericsson)
PN Pseudo-Noise
PP Pilot Pollution
PPP Point-to-Point Protocol
PRACH Physical Random Access Channel
P-RNTI Paging Radio Network Temporary Identity
PS Packet Switched
PSAP Public Safety Answering Point
P-SS Packet Switched Service/Primary Synchronization Signal
PSTN Public Switched Telephone Network
PTCRB PCS Type Certification Review Board
PUCCH Physical Uplink Control Channel
PUSCH Physical Uplink Shared Channel

Q

QAM Quadrature Amplitude Modulation
QCI QoS Class Identifier
QoE Quality of Experience
QoS Quality of Service
QPSK Quadrature Phase-Shift Keying

R

RA Routing Area/Random Access/Resource Allocation
RAB Radio Access Bearer
RAC Routing Area Code
RACH Random Access Channel

RAD Rapid Application Development
RAI Routing Area Indentity
RAN Radio Access Network
RAR Random Access Response
RA-RNTI Random Access Radio Network Temporary Identity
RAT Radio Access Technology
RAU Routing Area Update
RB Resource Block/Radio Bearer
RBG Resource Block Group
RBS Radio Base Station (Ericsson)
RBW Resolution Bandwidth
RCLP Relative Carrier Leakage Power
RCMI Remote Control Management Interface
RDBMS Relational Database Management System
RDX Radio Digital Cross Domain
RE Resource Element
RES Response
RET Remote Electrical Tilting
RF Radio Frequency
RI Rank Indication
RIM RAN Information Management
RIT Radio Interface Technology
RL Radio Link
RLC Radio Link Control
RLF Radio Link Failure
RLT Radio Link Timeout
RMC Reference Measurement Channel
RMD Radio Measurement Distribution (Nortel)
RMS Root Mean Square
RNC Radio Network Controller
RNL Radio Network Layer
RNO Radio Network Optimization (Ericsson)
RNS Radio Network Subsystem
RNTI Radio Network Temporary Identifier
RNTP Relative Narrowband Transmit Power
RoHC Robust Header Compression
ROI Return on Investment
RR Radio Resource
RRC Radio Resource Control
RRM Radio Resource Management
RRU Remote Radio Unit
RS Reference Signal
RSCP Received Signal Code Power
RSRP Reference Signal Received Power
RSRQ Reference Signal Received Quality
RSSI Received Signal Strength Indicator
RTD Round Trip Delay
RTP Real-time Transport Protocol
RTT Round Trip Time
RTWP Received Total Wideband Power
RX Receiver
RXD Receive Diversity

S

S/P Serial to Parallel
SAE System Architecture Evolution
SAM Service Aware Manager (Alcatel-Lucent)
SAP Service Access Point
SCCP Signaling Connection Control Protocol
SC-FDMA Single Carrier Frequency Division Multiple Access
SCH Synchronization Channel
SCTP Stream Control Transmission Protocol
SDCCH Standalone Dedicated Control Channel
SDF Service Data Flow
SDMA Spatial Division Multiple Access
SDO Standards Development Organization
SDSL Symmetrical Digital Subscriber Line
SDU Service Data Unit
SEM Spectrum Emission Mask
SFBC Space-Frequency Block Coding
SFN Single Frequency Network/System Frame Number
SG Security Gateway
SGSN Serving GPRS Support Node
S-GW Serving Gateway
SI System Information
SIB System Information Block
SIM Subscriber Identity Module
SIMO Single Input Multiple Output
SINR Signal to Interference plus Noise Ratio
SIP Session Initiation Protocol
SIR Signal to Interference Ratio
SI-RNTI System Information Radio Network Temporary Identity
SISO Single Input Single Output/Soft Input Soft Output

SLA Service Level Agreement
SLR SGSN Location Register
SME Subject Matter Expert
SMS Short Message Service
SMLC Serving Mobile Locatoin Center
SN Sequence Number/Serving Network
SNR Signal-to-Noise Ratio
SO Segment Offset
SOA Service-Oriented Architecture
SON Self Optimizing/Organizing Network
SONET Synchronous Optical Network
SPID Subscriber Profile ID
SPMI System Power Management Interface
SPS Semi-Persistent Scheduling
SR Scheduling Request
SRB Signalling Radio Bearer
SRS Sounding Reference Signal
SRVCC Single Radio Voice Call Continuity
SS Subsystem System Simulator
SSC Secondary Synchronization Code
SSCH Secondary Synchroniization Channel
S-SS Secondary Synchronization Signal
STBC Space Time Block Coding
SU-MIMO Single User MIMO
SVD Singular Value Decomposition
SVN Software Version Number

T

TA Timing Advance/Tracking Area/Time Alignment
TAC Tracking Area Code
TAI Tracking Area Identity
TAS Time Accurate Strobe
TAU Tracking Area Update
TB Transport Block
TCH Traffic Channel
TCP Transmission Control Protocol
TDD Time Division Duplex
TDMA Time Division Multiple Access
TDOA Time Difference of Arrival
TDS Time Domain Scheduling
TD-SCDMA Time Domain Synchronous Code Division Multiple Access
TEI Terminal Endpoint Identifier
TEID Tunnel Endpoint Identifier
TF Transport Format
TFT Traffic Flow Template
TM Transparent Mode
TMA Tower Mounted Amplifier
ToA Time of Arrival
TOI Third Order Intercept
TP Transport Protocol
TPC Transmit Power Control
TR Technical Report
TRU Trans-receive Unit
TRX Transceiver
TrCH Transport Channel
TS Technical Specification
TSG Technical Specification Group
TSI Time Slot Interchange
TTI Transmission Time Interval
TTL Transistor to Transistor Logic
TX Transmitter
TXD Transmit Diversity

U

UARFCN UTRA Absolute Radio Frequency Channel Number
UCI Uplink Control Information
UDP User Datagram Protocol
UE User Equipment
UE-AMBR UE Aggregate Maximum Bit Rate
UETR User Equipment Traffic Recording (Ericsson)
UI User Interface
UL Uplink
UL-SCH Uplink Shared Channel
UM Unacknowledged Mode
UMB Ultra-Mobile Broadband
UMD Unacknowledged Mode Data
UMTS Universal Mobile Telecommunications System
UP User Plane
UPE User Plane Entity
UpPTS Uplink Pilot Time Slot
USB Universal Serial Bus
USIM Universal Subscriber Identity Module

UTRAN Universal Terrestrial Radio Access Network

V

VAS Value Added Service
VBR Variable Bit Rate
VCC Voice Call Continuity
VHF Very High Frequency
VLAN Virtual Local Area Network
VLF Very Low Frequency
VLR Visitor Location Register
VoIMS Voice over IP Multimedia Subsystem
VoIP Voice over Internet Protocol
VPLMN Visited Public Land Mobile Network
VPN Virtual Private Network
VRB Virtual Resource Block
VRC Variable Reference Channel/Virtual Redundancy Check

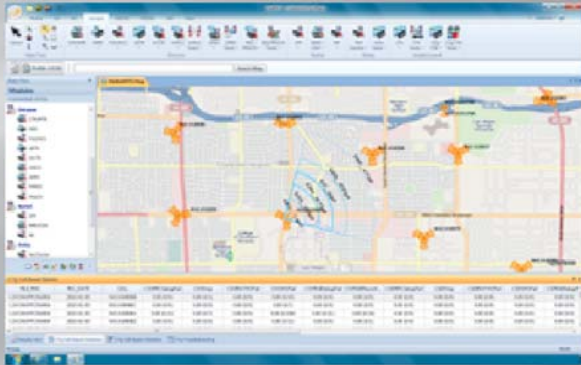
W

WAN Wide Area Network
WAP Wireless Application Protocol
WCDMA Wideband Code Division Multiple Access
WCTR WCDMA Cell Trace Recording (Ericsson)
WDM Wavelength Division Multiplexing
WF Weight Factor
WG Working Group
WICL Wireless Internet Command Language
WiFi Wireless Fidelity
WiMAX Worldwide Interoperability for Microwave Access
WPS Wireless Provisioning System (Alcatel-Lucent)
WLAN Wireless Local Area Network
WMRR WCDMA Mobile Report Results (Ericsson)
WML Wireless Markup Language
WMS Wireless Management System (Alcatel-Lucent)
WNCS WCMDA Neighbor Cell Support (Ericsson)
WPC Wireless Packet Core
WQA Wireless Quality Analysis (Alcatel-Lucent)
WSP Wireless Service Provider
WTA Wireless Trace Analyzer (Alcatel-Lucent)
WWW World Wide Web

X

XOR Exclusive Or
XML Extensible Markup Language
XPR Cross Polarization Ratio

OptPCS™



OptPCS™ is the first truly integrated network optimization desktop or enterprise tool for multi-band, multi-vendor 2G/3G/4G (LTE) networks. By integrating cell configurations data with data collected across all platforms in the network, OptPCS™ correlates data to provide actionable optimization results via a single platform at a low cost with or without drive test data.

Learn more about OptPCS™ by visiting our website at www.ttswireless.com or contacting us by email at OptPCS@ttswireless.com

Telecom Technology Services, Inc. 